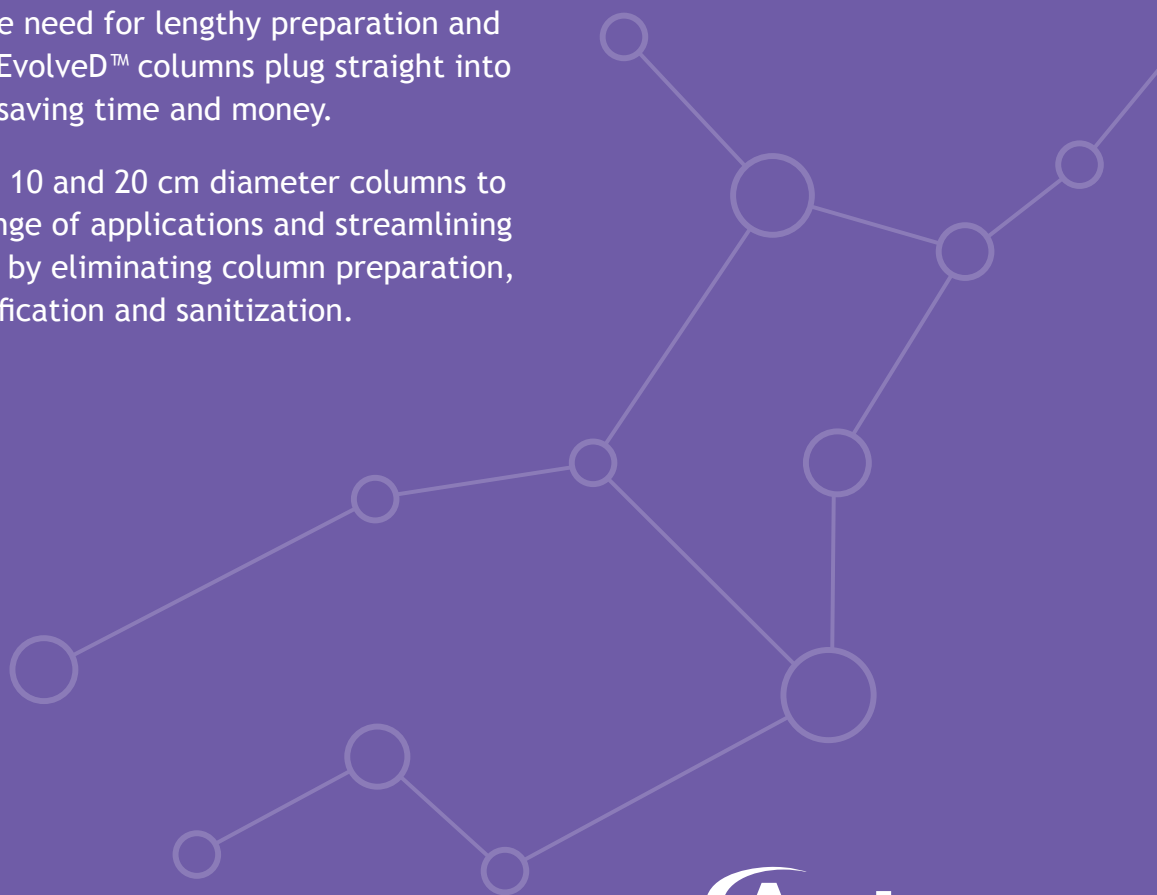




EvolveD™ Process Columns

EvolveD™ Process columns are prepacked, high performance, ready-to use process columns. Eliminating the need for lengthy preparation and qualification, EvolveD™ columns plug straight into your process, saving time and money.

Available in 7, 10 and 20 cm diameter columns to suit a wide range of applications and streamlining your workflow by eliminating column preparation, packing, qualification and sanitization.



Search: EvolveD Columns

Astrea
Bioseparations
Purity by Design

Our Technology

Building on the success of the Evolve™ Process column range, Astrea Bioseparations have developed the Evolved™ column range to provide a 'ready-to-use' prepacked format. Available in 7, 10 and 20 cm diameters, with bed height options of either 10 or 20 cm.

The column tubes are manufactured from pharmaceutical grade polypropylene, with a non-metallic flow path & utilise a woven polymer bed support capable of operating at both high pressure & high flow rates, whilst eliminating the risk of corrosion in the wetted flow areas.

The columns are supplied qualified and ready for use. This provides significant cost savings whilst eliminating time in column preparation and validation.

Evolved™ Process Columns are supplied pre-packed with media from Astrea's range of bioseparation products for applications such as protein purification & contaminant removal but can also be custom packed with a wide range of chromatography media types including agarose & polymethacrylate based adsorbents (please contact us to discuss your specific requirements).



High Performance*

- 4 bar pressure rating
- Flow rates up to 1000 cm/h
- 2 - 30 °C operating temperature range
- Scalability between column range
- All elastomers used in wetted regions suitable for biopharmaceutical applications & conform to both FDA & USP VI requirements

Non-Metallic

- Non-metallic flow path enables the use of high salt and guanidine HCl solutions
- Eliminates corrosion risk in wetted flow areas
- Prevents any product inactivation through metal contact
- Chemical resistance (see technical information table for more details)

Ready to Use

Evolved™ Process Columns are supplied:

- Pre-packed
- Fully tested and certified (HETP, Asymmetry and Flowrate at set pressure)
- Clean room packed and double bagged

Validated

- Full transportation studies completed (ISTA Packaging testing)
- Packed under ISO7 conditions
- GMP - API qualified environment
- Regulatory Support File (RSF) available

* pressure rating and flow rates are of the empty column

EvolveD™ Range

Internal Diameter:	7 cm	10 cm	20 cm
Product Code:	AD070100 & AD070200	AD100100 & AD100200	AD200100 & AD200200
Cross Sectional Area (cm ²):	38.5	78.5	314.2
Bed Height (mm):	100 & 200	100 & 200	100 & 200
Pressure Rating (Bar)**:	4	4	4
Operating Temperature (°C):	2 - 30	2 - 30	2 - 30
Bed Support Pore Size (µm):	8	8	8
Chemical Conformity (wetted components):	All commonly used downstream processing buffers & solutions including acids, alcohols, salts, glycols, detergents, denaturants, sodium hypochlorite & sodium hydroxide (see Operating Manuals for full details before use)		
Total Weight (kg):	3.1 & 4.0	3.3 & 4.6	11.8 & 16.7

Accessories

A wide range of disposable accessories are available, including:

- Bubble trap kits
- Flow reversal kits
- Column Isolation kits
- Connection kits
- Connectors and adaptors

Technical Support

- Astrea are experts in chromatography development and can help optimize all process parameters including column packing
- Astrea also supply a range of Evolve™ Process columns along with replacement parts and accessories

** pressure rating of the empty column



Contact Us:

With sales and support offices in North America and Europe, R&D facilities in Cambridge, UK and manufacturing facilities located on the Isle of Man, British Isles and in Joliette, QC, Canada we are able to meet your needs and support your application wherever you are.

Sales and Technical Support

Please contact us for further sales or technical support information regarding any of our innovative biochromatography products and services.

Horizon Park, Barton Road,
Comberton, Cambridge,
CB23 7AJ, UK

Tel: +44 (0) 1223 433 800

Sales:	sales@astrea-bio.com
Technical support:	techsupport@astrea-bio.com
Quality support:	quality@astrea-bio.com
Website:	www.astreabioseparations.com